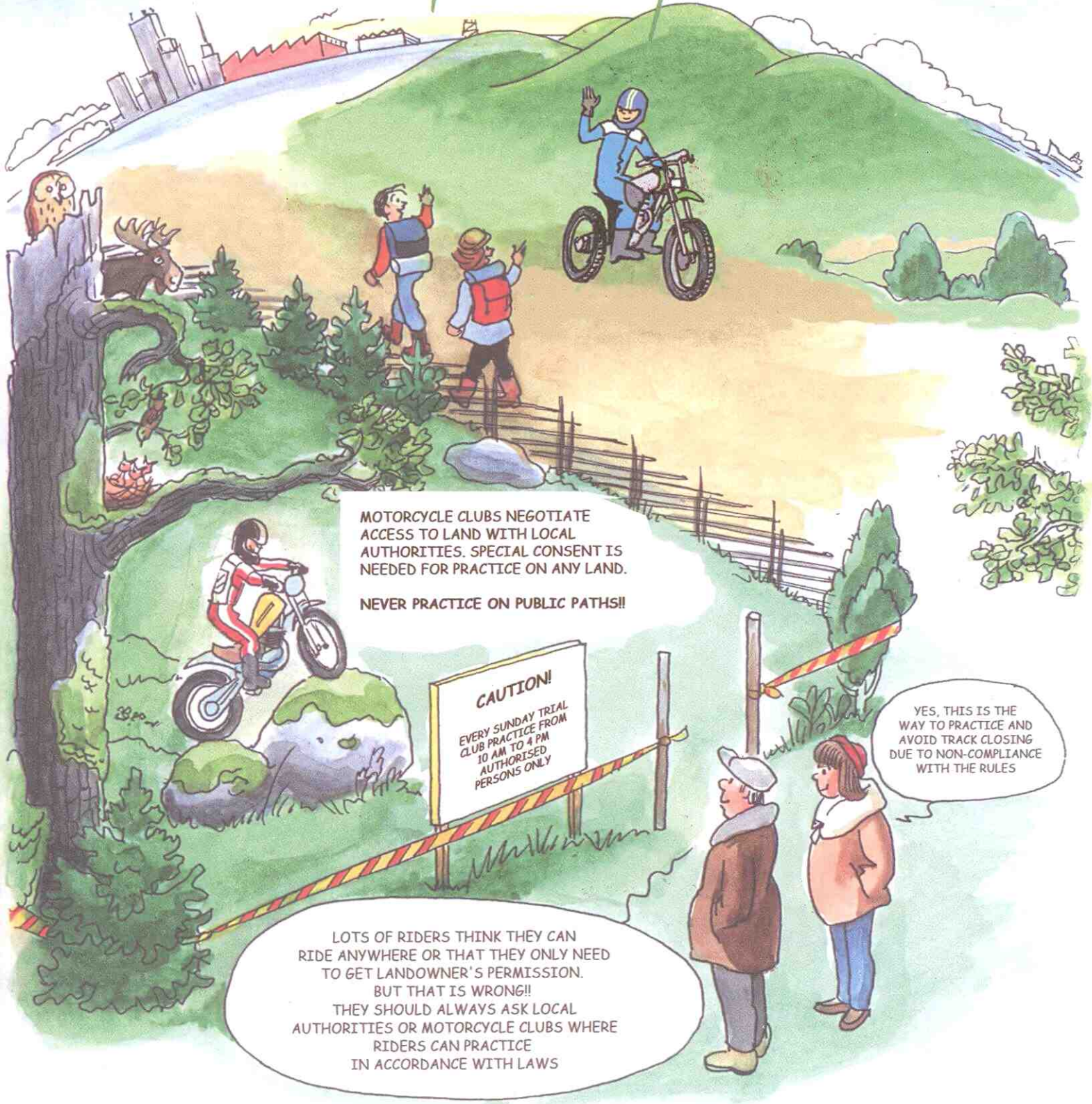


Environmental Policy



MOTORCYCLE CLUBS NEGOTIATE ACCESS TO LAND WITH LOCAL AUTHORITIES. SPECIAL CONSENT IS NEEDED FOR PRACTICE ON ANY LAND.

NEVER PRACTICE ON PUBLIC PATHS!!

CAUTION!
EVERY SUNDAY TRIAL CLUB PRACTICE FROM 10 AM TO 4 PM AUTHORISED PERSONS ONLY

YES, THIS IS THE WAY TO PRACTICE AND AVOID TRACK CLOSING DUE TO NON-COMPLIANCE WITH THE RULES

LOTS OF RIDERS THINK THEY CAN RIDE ANYWHERE OR THAT THEY ONLY NEED TO GET LANDOWNER'S PERMISSION. BUT THAT IS WRONG!! THEY SHOULD ALWAYS ASK LOCAL AUTHORITIES OR MOTORCYCLE CLUBS WHERE RIDERS CAN PRACTICE IN ACCORDANCE WITH LAWS

ENVIRONMENTAL STEWARD OF THE CLUB/FMN

THE CLUB COMMITTEE MUST ENSURE THAT CLUB ACTIVITIES DISTURB THE ENVIRONMENT AS LITTLE AS POSSIBLE. THE CLUB COMMITTEE SHOULD APPOINT AN OFFICIAL WHO HANDLES THE ENVIRONMENTAL QUESTIONS AND REPRESENTS THE CLUB REGARDING:



- LOCAL AUTHORITIES
- REGIONAL ENVIRONMENTAL AUTHORITIES
- FIM ENVIRONMENTAL POLICY
- OTHER ENVIRONMENTAL ORGANISATIONS
- LOCAL PRESS, RADIO, TV, ETC.

THE ENVIRONMENTAL STEWARD SHOULD ALSO:

- INFORM AND GIVE ANSWERS ON ENVIRONMENTAL QUESTIONS
- ORGANISE ENVIRONMENTAL ACTIVITIES/ACTIONS ON BEHALF OF THE CLUB

NO RIGHT OF ACCESS

THERE IS NO SUCH THING AS PUBLIC LAND. EVEN AN APPARENTLY DERELICT SITE ON THE FRINGE OF A TOWN OR THE REMOTEST MOUNTAIN TOP IS OWNED BY SOMEONE. JUST BECAUSE YOU'VE SEEN OTHER PEOPLE RIDING DOES NOT MAKE IT RIGHT FOR YOU TO DO THE SAME.

THEY HAVE PERMISSION, SO SHOULD YOU!!

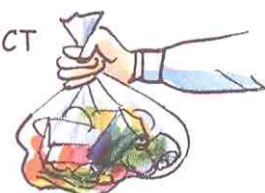


UNLESS YOU HAVE SPECIAL CONSENT, YOU CANNOT RIDE ON A FOOTPATH, BRIDLEWAY, OPEN MOORLAND, SAND DUNE OR FOREST



WHEN GOING FOR A RIDE, ALWAYS RESPECT THE FOLLOWING POINTS:

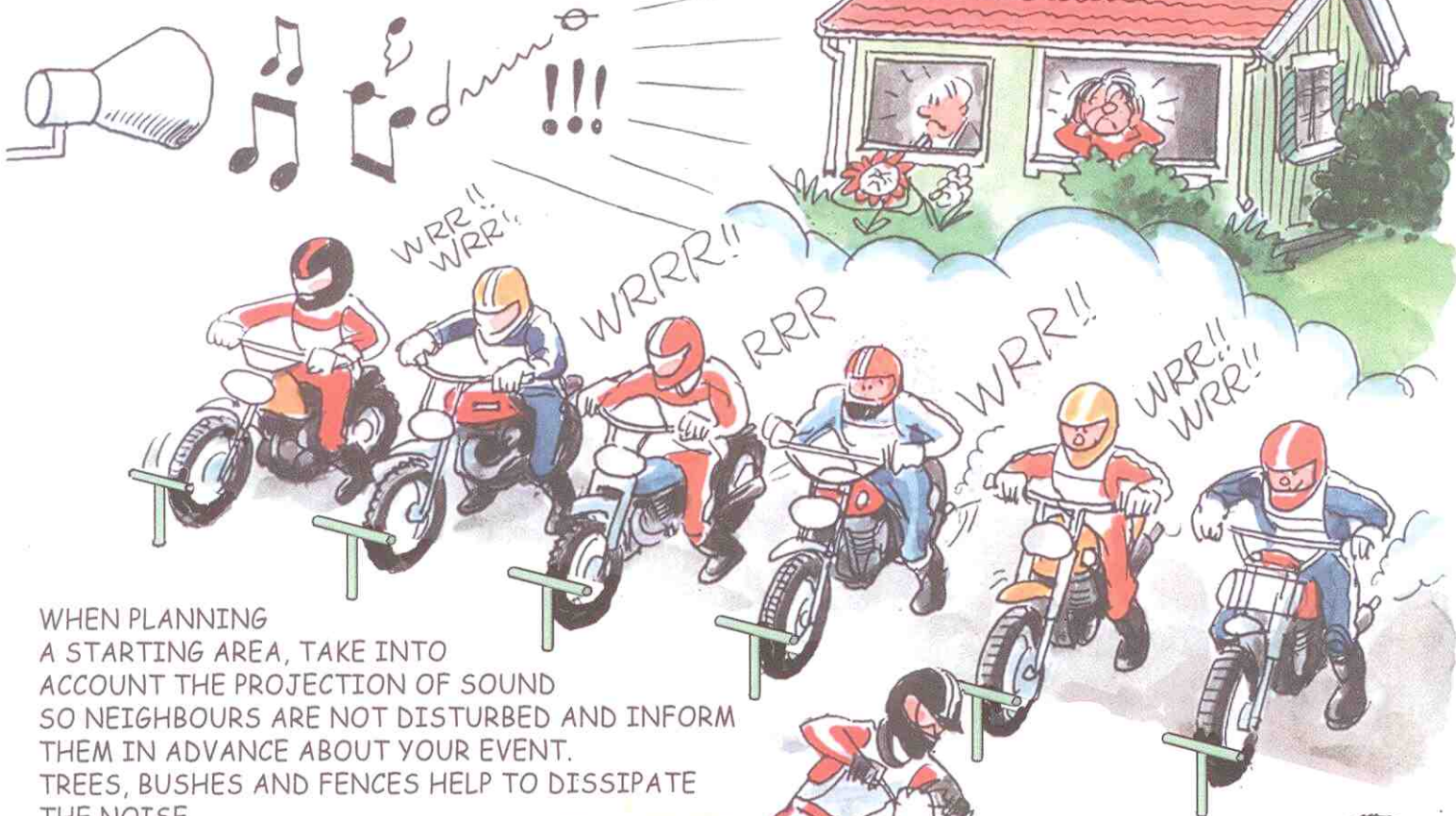
- HAVE RESPECT FOR YOUR FELLOW MAN, ANIMALS AND THE ENVIRONMENT
- REDUCE POLLUTION WITH THE USE OF THE CORRECT FUEL/OIL MIXTURE
- TAKE CARE OF RUBBISH RESPONSIBLY
- REDUCE SPEED WHEN MEETING PEDESTRIANS



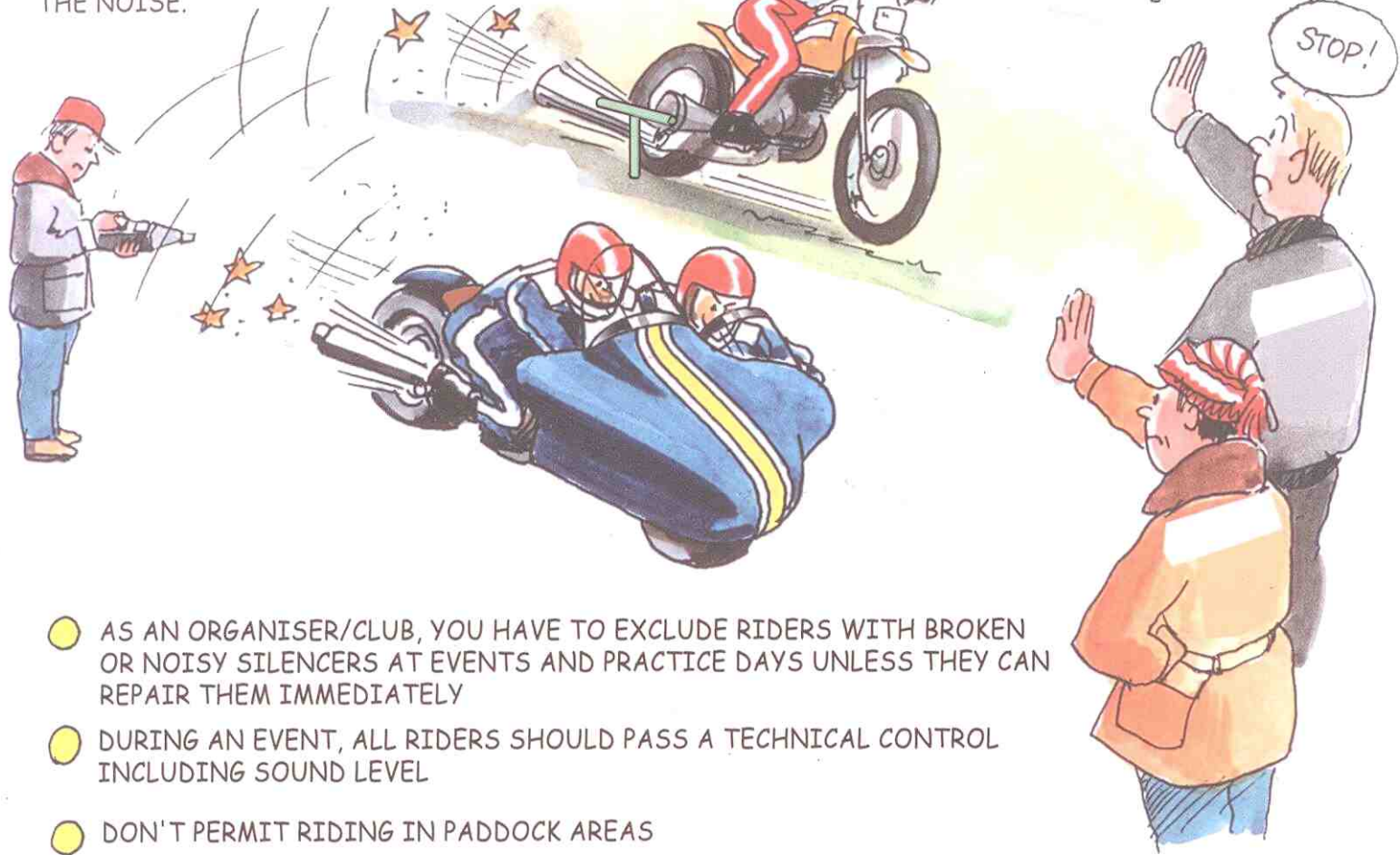
NOT EVERYBODY LIKES TO HEAR NOISY EVENTS



PAY ATTENTION TO PLACING,
DIRECTION AND VOLUME OF THE PUBLIC ADDRESS SYSTEM.
ONLY USE WHEN NECESSARY



WHEN PLANNING
A STARTING AREA, TAKE INTO
ACCOUNT THE PROJECTION OF SOUND
SO NEIGHBOURS ARE NOT DISTURBED AND INFORM
THEM IN ADVANCE ABOUT YOUR EVENT.
TREES, BUSHES AND FENCES HELP TO DISSIPATE
THE NOISE.



- AS AN ORGANISER/CLUB, YOU HAVE TO EXCLUDE RIDERS WITH BROKEN OR NOISY SILENCERS AT EVENTS AND PRACTICE DAYS UNLESS THEY CAN REPAIR THEM IMMEDIATELY
- DURING AN EVENT, ALL RIDERS SHOULD PASS A TECHNICAL CONTROL INCLUDING SOUND LEVEL
- DON'T PERMIT RIDING IN PADDOCK AREAS
- KEEP SOUND LEVEL TO A MINIMUM DURING PRACTICES AND RACES

CHECKLIST FOR

NEVER CUT DOWN TREES OR REMOVE HEDGES WITHOUT PERMISSION FROM THE APPROPRIATE AUTHORITY!!

AFTER THE MEETING

- REMOVE POSTERS AND SIGNS
- TIDY UP THE PLACE INCLUDING THE PARKING AREA
- TAKE AWAY ANY DAMAGED TREES AND REPLANT IF NECESSARY
- REMOVE BARRIER TAPE
- LEVEL THE TRACK AND PADDOCK IMMEDIATELY AFTER THE MEETING
- DISPOSE OF ALL RUBBISH IN THE PROPER WAY
- ANALYSE!! CAN IT BE BETTER NEXT TIME?

THE FACILITY HAS TO BE TAKEN CARE OF IN A WAY THAT ATTRACTS PEOPLE TO COME AS VISITORS

REMEMBER TO TIDY UP AND CLEAN THE TOILETS AT REGULAR INTERVALS

KEEP THE TRACK REGISTER UP TO DATE

WHEN PLANNING THE STARTING AREA, TAKE INTO CONSIDERATION THE PROJECTION OF SOUND LEVELS, NOT TO DISTURB NEIGHBOURS

WHEN PAINTING, USE ENVIRONMENTALLY ACCEPTED PAINT

IN THE PITS, INSTALL CLEAN TOILETS WITH BASINS AND RUNNING WATER. ALSO INCLUDE TOILETS FOR WOMEN

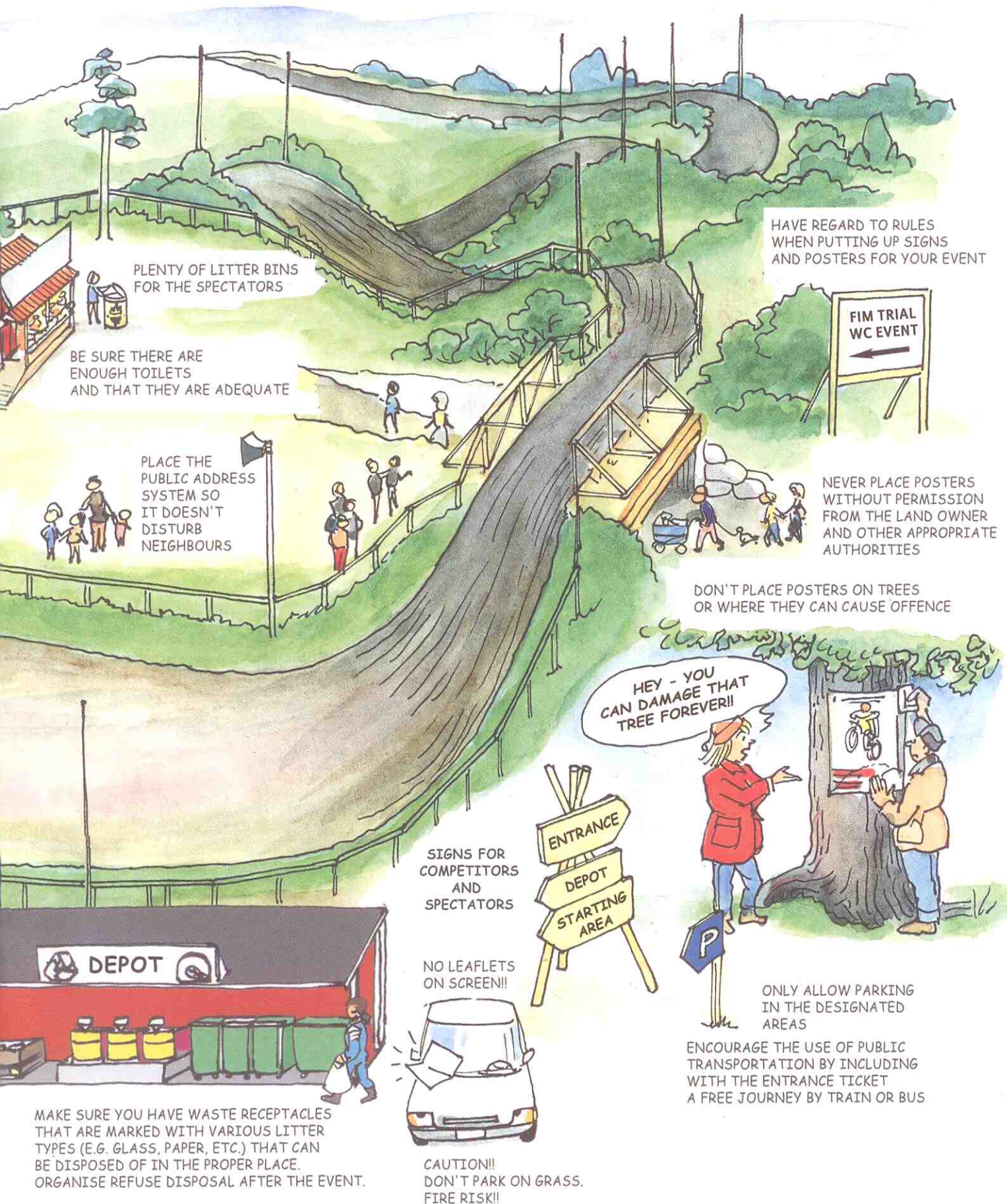
PLANT SHRUBS AND TREES AROUND UNSIGHTLY BUILDINGS

WASHING AREA WITH HIGH PRESSURE, JUST WATER, NO CHEMICALS

WHEN BUILDING NOISE BARRIERS...
....ASK FOR PERMISSION FROM THE AUTHORITIES FIRST!

SEWER INCLUDING SEPARATE OIL COLLECTOR

THE ORGANISER



PLENTY OF LITTER BINS FOR THE SPECTATORS

BE SURE THERE ARE ENOUGH TOILETS AND THAT THEY ARE ADEQUATE

PLACE THE PUBLIC ADDRESS SYSTEM SO IT DOESN'T DISTURB NEIGHBOURS

HAVE REGARD TO RULES WHEN PUTTING UP SIGNS AND POSTERS FOR YOUR EVENT



NEVER PLACE POSTERS WITHOUT PERMISSION FROM THE LAND OWNER AND OTHER APPROPRIATE AUTHORITIES

DON'T PLACE POSTERS ON TREES OR WHERE THEY CAN CAUSE OFFENCE

HEY - YOU CAN DAMAGE THAT TREE FOREVER!!

SIGNS FOR COMPETITORS AND SPECTATORS



NO LEAFLETS ON SCREEN!!



CAUTION!! DON'T PARK ON GRASS. FIRE RISK!!

ONLY ALLOW PARKING IN THE DESIGNATED AREAS

ENCOURAGE THE USE OF PUBLIC TRANSPORTATION BY INCLUDING WITH THE ENTRANCE TICKET A FREE JOURNEY BY TRAIN OR BUS

MAKE SURE YOU HAVE WASTE RECEPTACLES THAT ARE MARKED WITH VARIOUS LITTER TYPES (E.G. GLASS, PAPER, ETC.) THAT CAN BE DISPOSED OF IN THE PROPER PLACE. ORGANISE REFUSE DISPOSAL AFTER THE EVENT.

REMEMBER: ANY PERMANENT BUILDINGS OR TRACK FEATURES WHICH ARE NOT REMOVED IMMEDIATELY AFTER AN EVENT, REQUIRE PLANNING PERMISSION!

Geek

DON'T!!!!

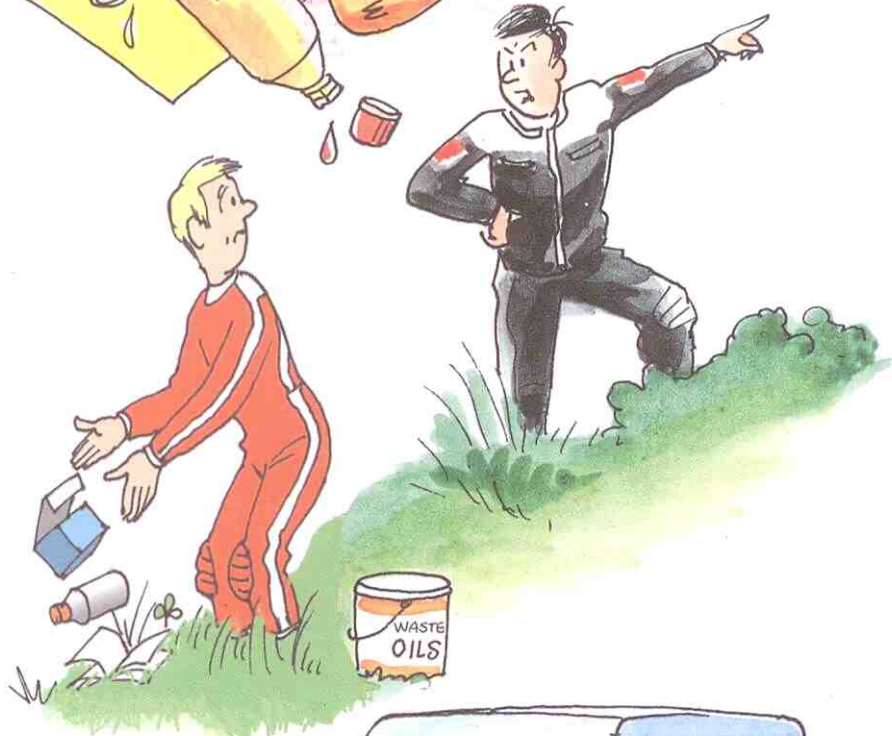
DON'T FORGET TO ALWAYS USE ENVIRONMENTAL MATS WHEN WORKING ON YOUR BIKE TO AVOID LEAKS OF FUEL, OIL, CLEANING, DEGREASING, COOLING AND BRAKE FLUIDS INTO THE GROUND. IT AFFECTS THE SOIL BALANCE, THE GROUND WATER AND NATURAL WATERSOURCES



DON'T THROW AWAY!! ALWAYS USE CONTAINERS OR FACILITIES TO RECOVER RUBBISH, OILS, DETERGENTS, ETC.



DON'T POUR OIL ONTO THE GROUND!! USE AN ENVIRONMENTAL MAT!!



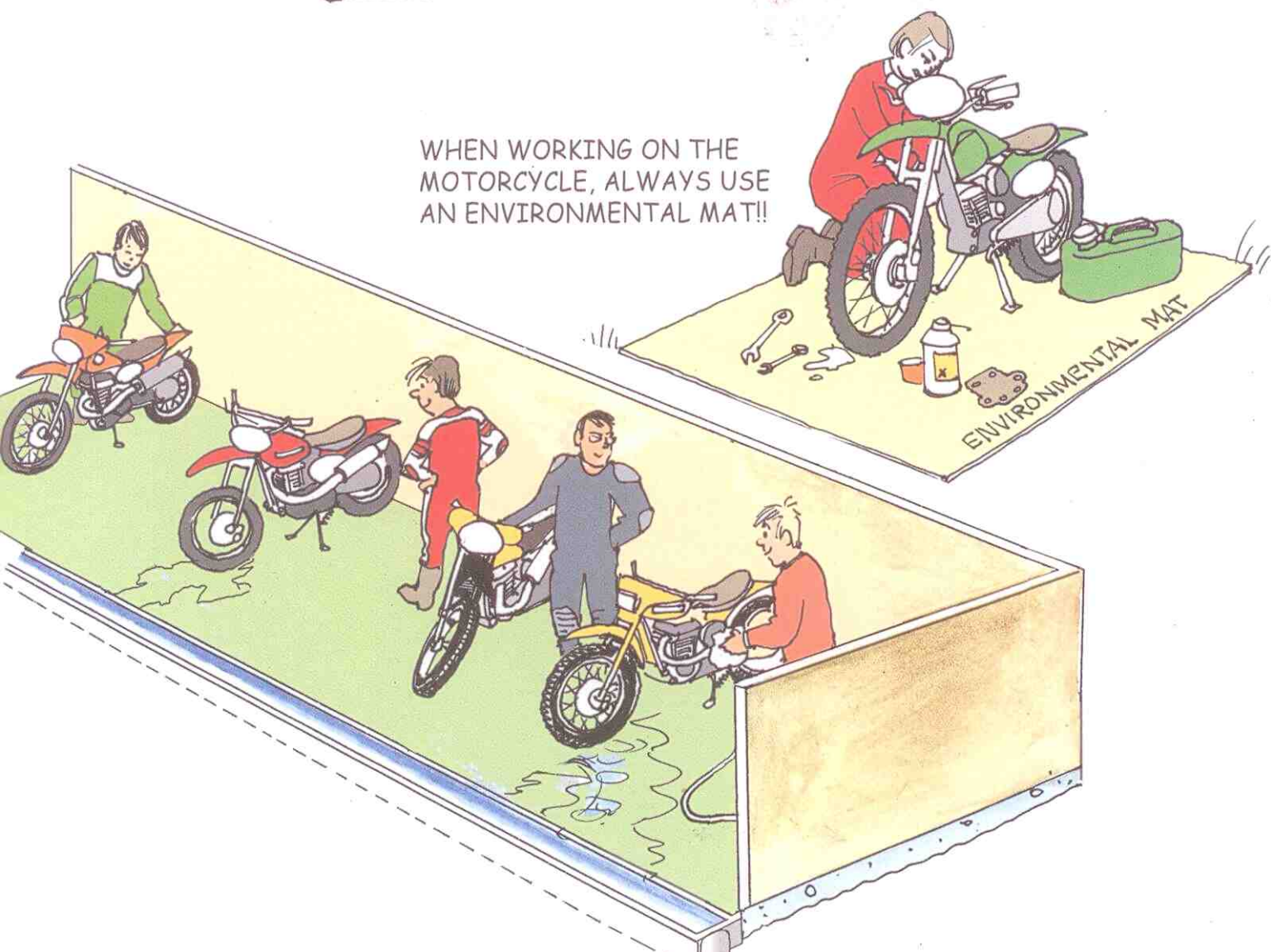
DON'T WASH YOUR BIKE OR YOUR VAN OUTSIDE DESIGNATED AREAS!!!



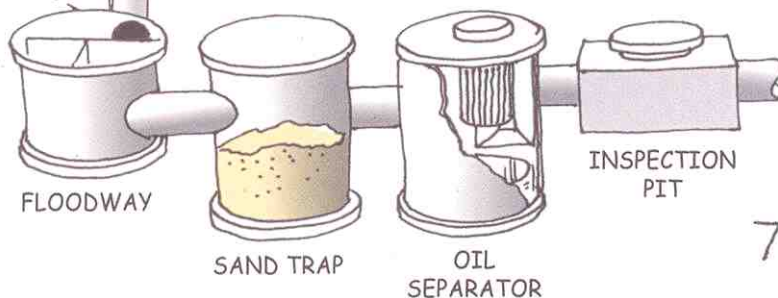
DO: DO TAKE CARE OF ENVIRONMENTALLY DANGEROUS MATERIALS IN A PROPER MANNER. TRY TO RECYCLE MATERIAL IN AN ATTEMPT TO MINIMISE YOUR RUBBISH HEAP.



WHEN WORKING ON THE MOTORCYCLE, ALWAYS USE AN ENVIRONMENTAL MAT!!



WASHING SHOULD BE DONE ONLY IN DESIGNATED AREAS WITH A SOLID FLOOR BOOTH AND AN OIL COLLECTOR



MISCELLANEOUS INFORMATION



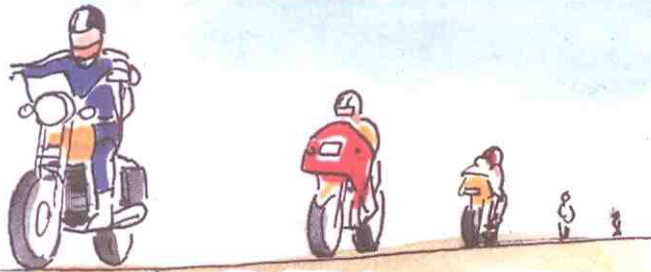
★ ON THE HIGHWAY, MOTORCYCLISTS MUST OBEY THE TRAFFIC RULES

★ RIDE SAFELY AND BE RESPONSIBLE IN TRAFFIC



★ CONSERVE FUEL, REDUCE POLLUTION
- DON'T REV YOUR ENGINE MORE THAN NECESSARY

★ ONLY USE LEGAL ROADS



★ KEEP A SAFE DISTANCE WHEN RIDING IN GROUPS

★ RESPECT FIM ENVIRONMENTAL CODE

LIVING TOGETHER

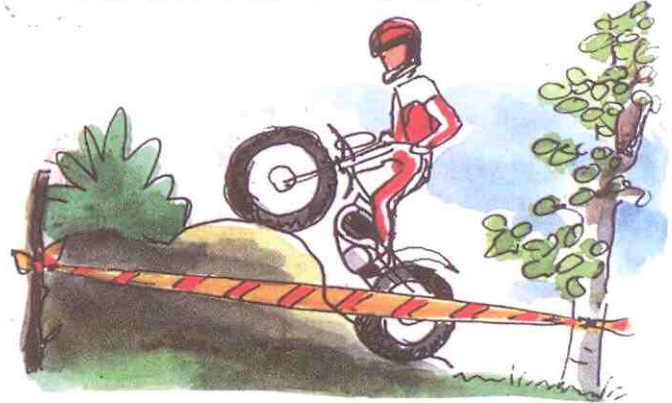
IF WE ACT RESPONSIBLY, THE WORLD IS OURS TO ENJOY.....
.....BUT WE ONLY HAVE ONE!!

THERE IS ENOUGH SPACE FOR MANY MORE MOTORCYCLES IN THE FUTURE,
ONLY IF WE ACT RESPONSIBLY!!

RIDE GREEN !!!

WE MUST BE ENVIRONMENTALLY CONSCIOUS WHEN PLANNING AREAS AND TAKE STEPS TO ENSURE WE CAN CONTINUE TO ENJOY THE RECREATIONAL FREEDOM PROVIDED BY OUR MOTORCYCLES

★ RIDERS USING CLUB ENDURO, TRIAL, GRASS TRACK AND MOTOCROSS TRACKS SHOULD WEAR IDENTIFICATION SHOWING THEY ARE PERMITTED TO DO SO



★ USING MOTOR VEHICLES IN OFF-ROAD TERRAIN IS ONLY ALLOWED IF YOU HAVE PERMISSION FROM THE LAND OWNER AND THE APPROPRIATE AUTHORITIES

